

Müller Elektronik Touch800® / Touch1200®

Touch800®



Touch1200®

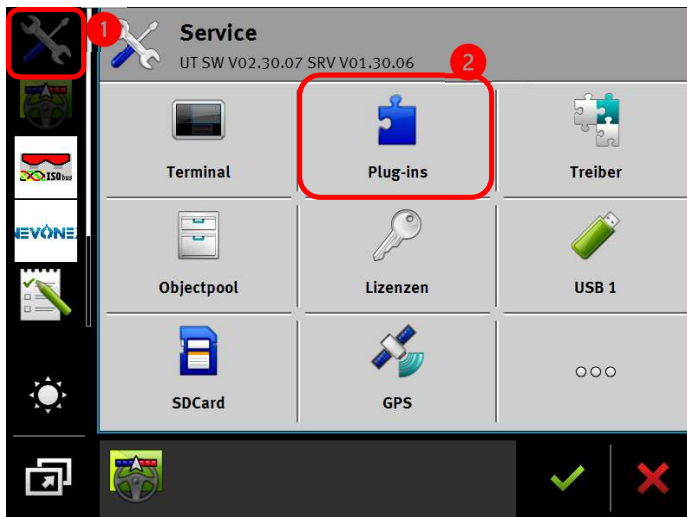


[sources: Müller Elektronik]

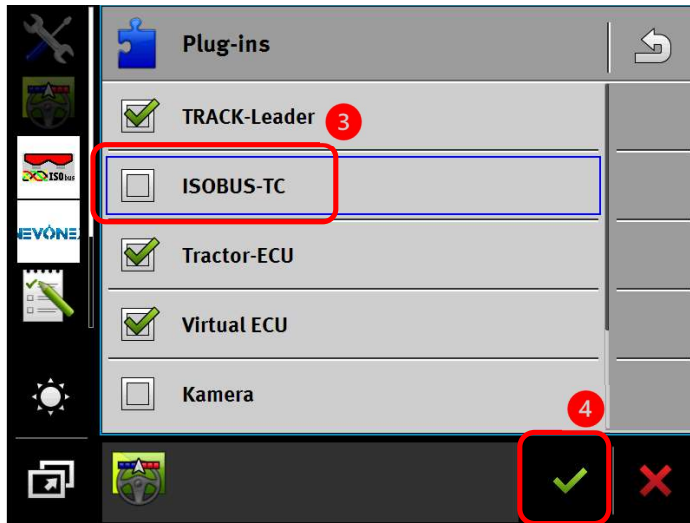
Disable / Enable ISOBUS Task Controller (TC)

To run a NEVONEX Digital Service, NEVONEX must be the task controller (TC) and all other task controllers must be disabled. If it is not possible to disable a TC, the function instance of the TC must be increased. For more information on ISOBUS, see "Cheatsheet_ISOBUS_Info".

The ISOBUS TC can be disabled in the ISOBUS settings.



- (1) Select the "Service" menu
- (2) Tab "Plug-ins" in the Service menu



- (3) Deactivate the "ISOBUS-TC"
- (4) Conform the changes

Remark: After changing the settings, a restart of the terminal is required.

[sources: Müller Elektronik]