

## John Deere GreenStar 2 Displays

GreenStar 2 1800



GreenStar 2 2100  
GreenStar 2 2600



[sources: John Deere]

### Disable / Enable ISOBUS Task Controller (TC)

To run a NEVONEX Digital Service, NEVONEX must be the task controller (TC) and all other task controllers must be disabled. If it is not possible to disable a TC, the function instance of the TC must be increased. For more information on ISOBUS, see "Cheatsheet\_ISOBUS\_Info"

### GreenStar 2 2600 Display

As far as known, TC-availability is limited on the GS2600-Display. Also, it's not clear if it's possible to switch off the TC-functionality.

### GreenStar 2 1800 Display



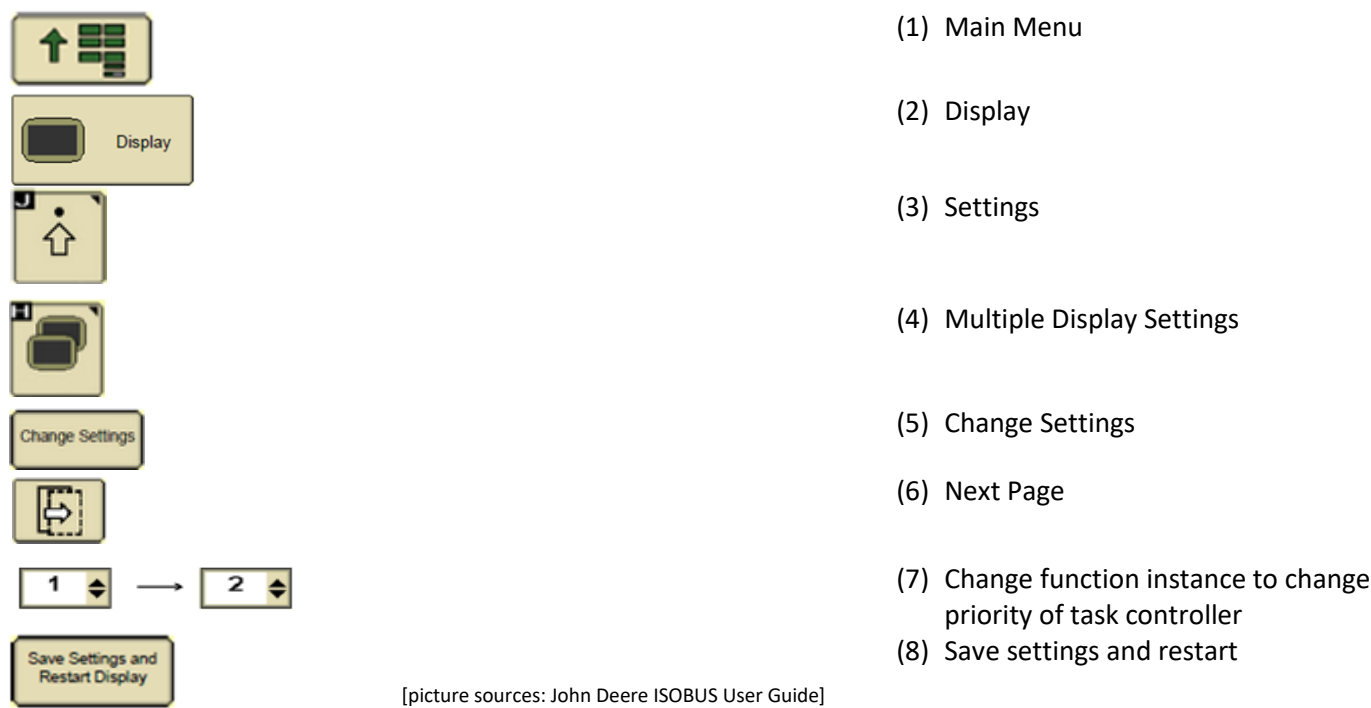
- (1) Main Menu
- (2) Display
- (3) Settings
- (4) Multiple Display Settings
- (5) Change Settings
- (6) Next Page
- (7) Check / uncheck Task Controller to enable / disable TC
- (8) Save settings and restart

[picture sources: John Deere ISOBUS User Guide]

Set function instance of Task Controller (TC)

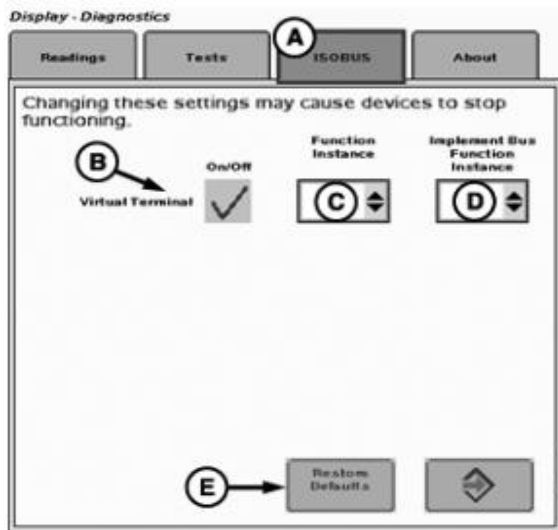
To run a NEVONEX Digital Service, NEVONEX must be the task controller (TC) and all other task controllers must be disabled. If it is not possible to disable a TC, the function instance of the TC must be increased. For more information on ISOBUS, see “Cheatsheet\_ISOBUS\_Info”

GreenStar 2 1800 Display



GreenStar 2 other Displays





[sources: John Deere GS2 Display-Basic Applications]

- (4) ISOBUS
- A) ISOBUS tab
  - B) VT check box
  - C) Function Instance
  - D) Implement bus function instance
  - E) Restore Default button